

## **HAWK LONG WAVE INFRARED DETECTOR**

**SELEX Galileo designs, develops and manufactures Infrared (IR) detectors at its dedicated facility in Southampton, UK. With a reputation for providing customers with the best in high performance and cost-effective technology for IR camera systems, SELEX Galileo offers a unique level of expertise.**

The Hawk Long Wave Infrared (LWIR) detector is a compact and lightweight 640 x 512 Mercury Cadmium Telluride (MCT) Integrated Detector Cooler Assembly (IDCA). The Hawk LWIR detector is designed for high performance, low cost imaging in the 8-10 $\mu$ m waveband.

Using the SELEX Galileo MCT process, the Hawk LWIR detector provides the highest environmental integrity along with the superior performance of focal plane detectors.

### **MAIN FEATURES**

- Extremely short stare time, typically 200 $\mu$ s, yielding minimum motion blur
- Simple to use
- Long Wave (LW) 8 - 10 $\mu$ m
- Small element pitch enables miniaturisation of the Dewar assembly and optics
- High electro-optic performance with low crosstalk, automatic anti-blooming at the pixel level and excellent sensitivity
- Interlaced readout mode doubles storage capacity available for each pixel, enabling a significant reduction in NETD
- Windowing gives enhanced frame rates over selected areas of the array
- Highest LW technology performance available in the world
- Longest LW technology DRI ranges
- Reduced stare time, less motion blur than QWIP detectors
- High performance in low scene temperature

### **KEY BENEFITS**

- Low cost
- Lightweight
- Compact
- High resolution

## Hawk Long Wave Infrared Detector



Detector production and test facilities

### TECHNICAL SPECIFICATIONS

#### Format

Array	640 x 512 pixels
Pixel Pitch	16µm
Active Area	10.24 x 8.19mm

#### Typical Performance

NETD (median)	32mK (23mK interlaced mode)
Pixel Operability	>99.8%

#### Interface Parameters

Modes	Snapshot or interlaced
Configuration Control	Single serial interface
Output Voltage Range	2.5V
Charge Capacity	7 x 10 <sup>6</sup> electrons (14 x 10 <sup>6</sup> interlaced mode)
Number of Outputs	4
Pixel Rate	Up to 10MHz per output
Intrinsic MUX noise	50µV rms
Array Operating Temperature	Up to 90K
Nominal Operating Voltage	6V
Minimum Pins for Operation	16
Number of Input Clocks	1
Window Material	Germanium
Window Thickness	1.73mm
Cold Filter Material	Silicon
Cold Filter Thickness	0.4mm

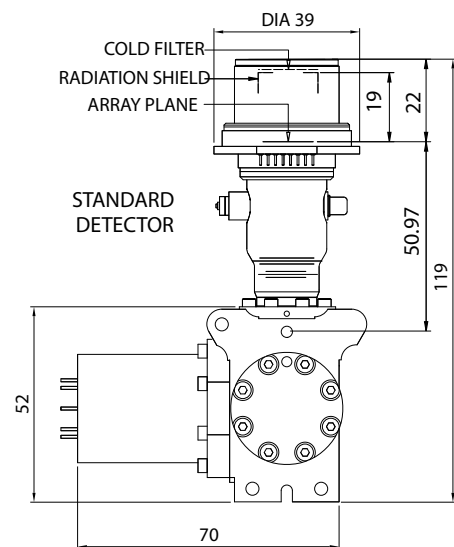
#### ICDA 6W

Weight	350g
Power Consumption	6W steady state
Cooling Engine	Rotary Stirling engine
Operating Temperature Range	-40 °C to +70 °C

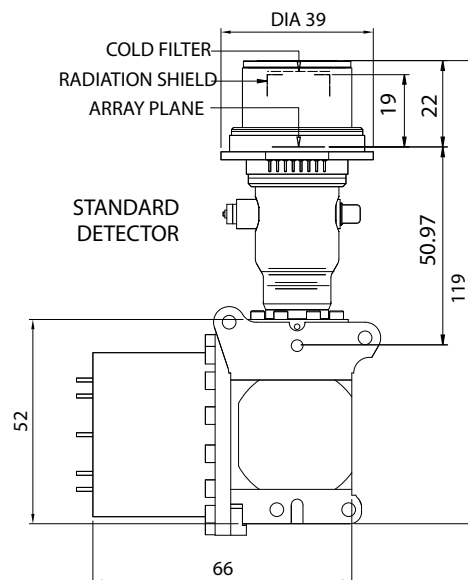
#### IDCA 8W

Weight	500g
Power Consumption	8W steady state
Cooling Engine	Rotary Stirling engine
Operating Temperature Range	-40 °C to +70 °C

#### IDCA 6W



#### IDCA 8W



All dimensions in millimetres

For more information please email [Infrared.sales@selexgalileo.com](mailto:Infrared.sales@selexgalileo.com)

SELEX Galileo Ltd, A Finmeccanica Company

Millbrook Industrial Estate, Southampton, Hampshire, SO15 0LG, United Kingdom, Tel: +44 (0) 23 8070 2300, Fax: +44 (0) 23 8031 6777

This publication is issued to provide outline information only and is supplied without liability for errors or omissions. No part of it may be reproduced or used unless authorised in writing.

We reserve the right to modify or revise all or part of this document without notice.

2010 © Copyright SELEX Galileo Ltd

[www.selexgalileo.com](http://www.selexgalileo.com)

SELEXGALILEO\UK\Dsh-100\011001\mjpg